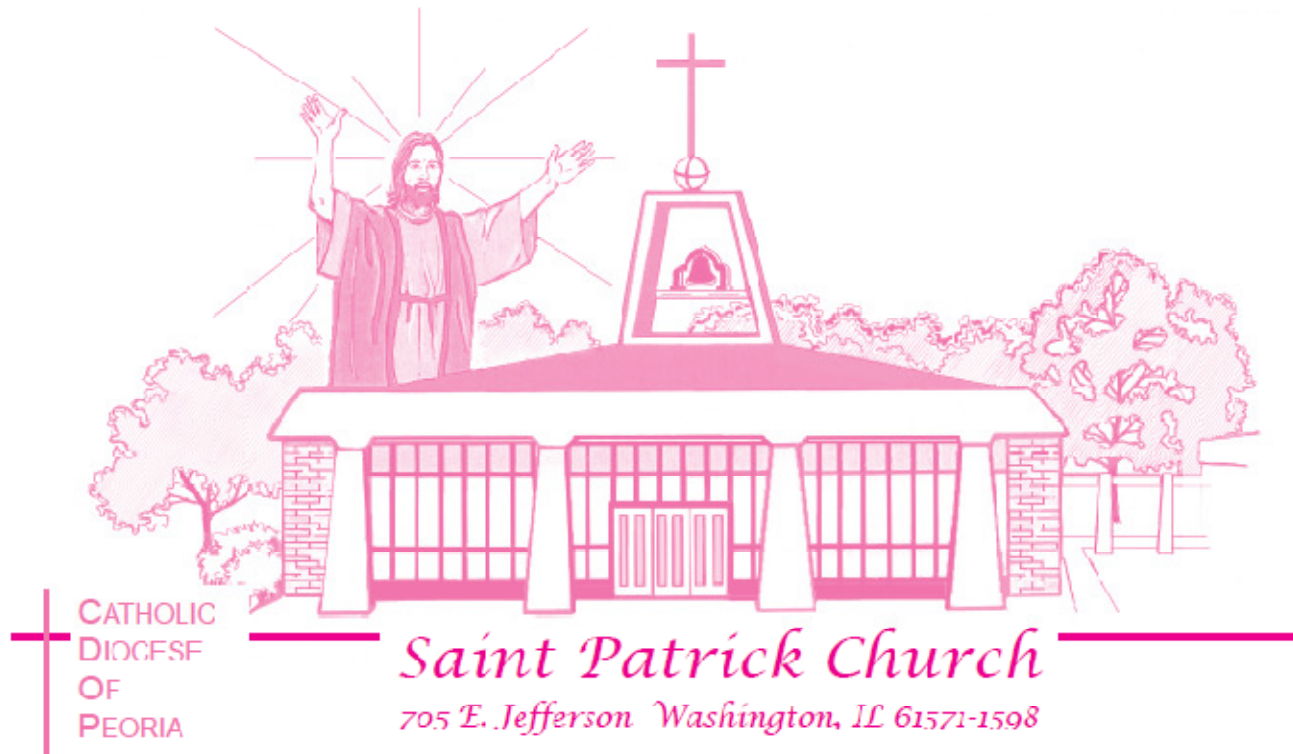


St. Pat's Tuition Task Force



Open Forum

February 27-28, 2010

Caution

- ❖ **This presentation material includes an overview of the work being done by the Tuition Task Force (TTF).**
- ❖ **The conclusions from the survey data and survey comments are based on an in-depth analysis of the survey results ... not just the overview data included in the presentation.**
- ❖ **The presentation represents a summary of the full scope of the work done thus far, and care should be taken to avoid taking individual elements out of context.**
- ❖ **Please contact one of the TTF members if you have any issues or concerns.**

Why Are We Here?

- Last August, we as a parish committed to ...
“solicit, collect, and examine additional information that will help us develop a revised tuition plan.”
- To do this, a Tuition Task Force (TTF) was created by the parish council
- We are here to provide you with an update on our progress

What Do We Want To Accomplish Today?

- **Attendees understand the working of the TTF**
 - **Where we've been**
 - **Where we're at now**
 - **Where we're going**
- **Various “myths” are clarified and/or dispelled**
- **Attendees recognize the major issues that need to be addressed**

Agenda

- **TTF Overview**
- **Tuition “Myths”**
- **TTF Work Plan**
- **Survey results**
- **Key Issues**
- **Q&A**

TTF Overview

➤ Overall objective

- **By mid-May, have in place a policy and plan for St. Pat's tuition that can be applied consistently in future years**

➤ Membership

- **Represents a cross-section of the parish**

- | | |
|-----------------------|--------------------------|
| • Chris Armstrong | Finance |
| • Dawn Crawford | At-Large |
| • Morrie Franz | At-Large, Stewardship |
| • Dr. Matt Gorman | Co-Chair |
| • John Grillot | Co-chair |
| • Dustin McDougall | Education Commission |
| • Eric Mickels | At-Large |
| • Dr. Shawn Piers | At-Large |
| • Christine Serangeli | Parent-Teacher Committee |

Tuition “Myths”

➤ **Myth #1: The diocese is telling us what our tuition plan must be.**

- The diocese “Blueprint for Our Future” (published last summer) could be interpreted as a “mandate”
- We met with the diocese and clarified the diocese position as it relates to tuition plans
 - The diocese recognizes that **“One size does not fit all”**
 - We have the flexibility to make a plan that is “right” for St. Pat’s
 - The diocese requires only two primary elements
 - The tuition plan must be sustainable by the parish
 - The tuition plan must have a component of “ability to pay”

Myth #1 ... NOT TRUE

Tuition “Myths”

- **Myth #2: The plan has already been determined ... the Tuition Task Force is merely “window dressing”**
 - The future tuition plan is clearly not a “done deal”
 - Fr. Donton and the Parish Council “prayerfully decided at this time to suspend the 3-year plan pending further input and study.”
 - Letter to all parishioners August 21, 2009
 - The TTF was created with clear direction to “solicit, collect, and examine additional information that will help us develop a revised tuition plan.”

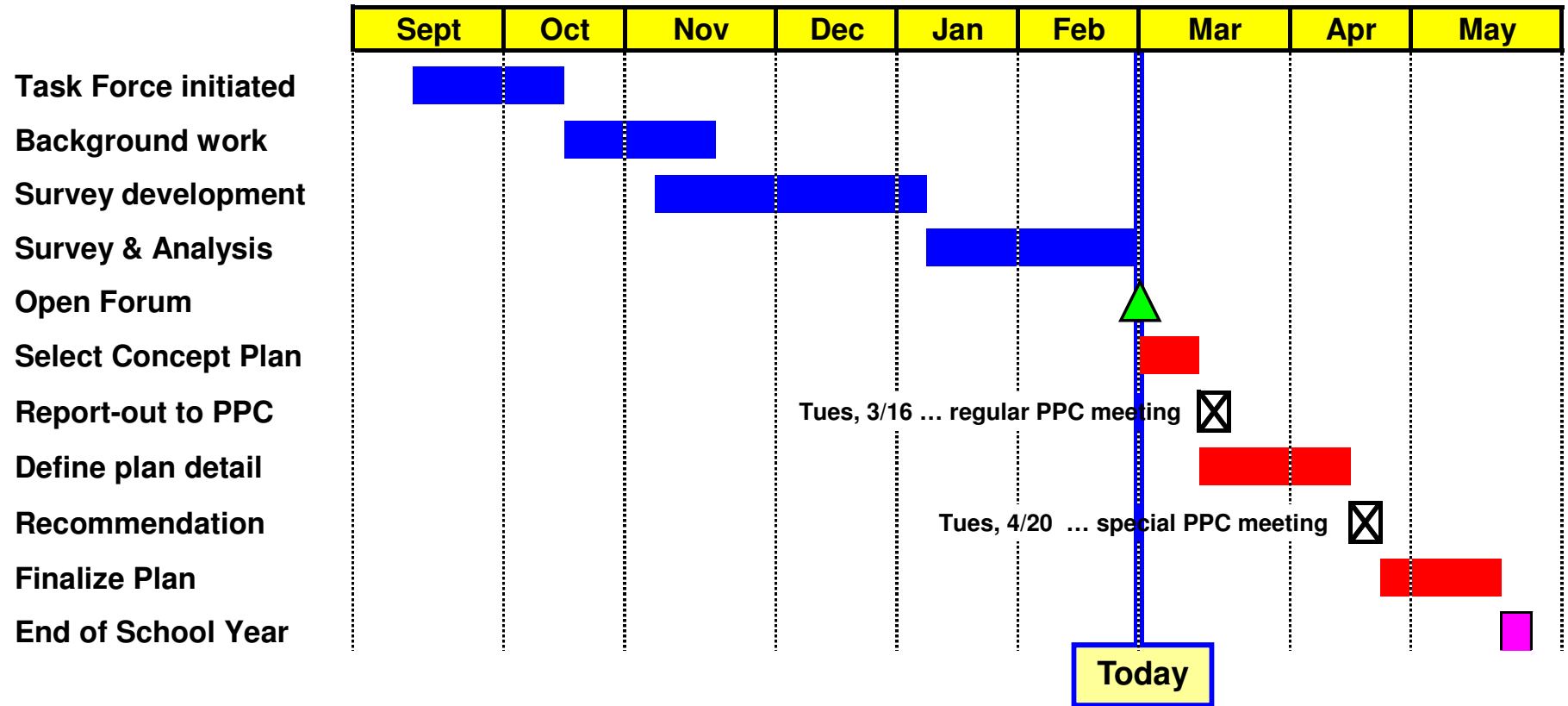
Myth #2 ... NOT TRUE

Tuition “Myths”

- **Myth #3: The TTF already has decided on its recommendation, and is just going through the motions**
 - The TTF is committed to the process and our work plan
 - We have had to consciously resist jumping to a solution
 - Working to gather data and listen to various inputs has been our focus thus far ... and is a good thing for the process
 - We are only now about to start the process to identify, evaluate, and select a concept
 - We do not have a recommendation ... but we’re working on it !

Myth #3 ... NOT TRUE

TTF Work Plan



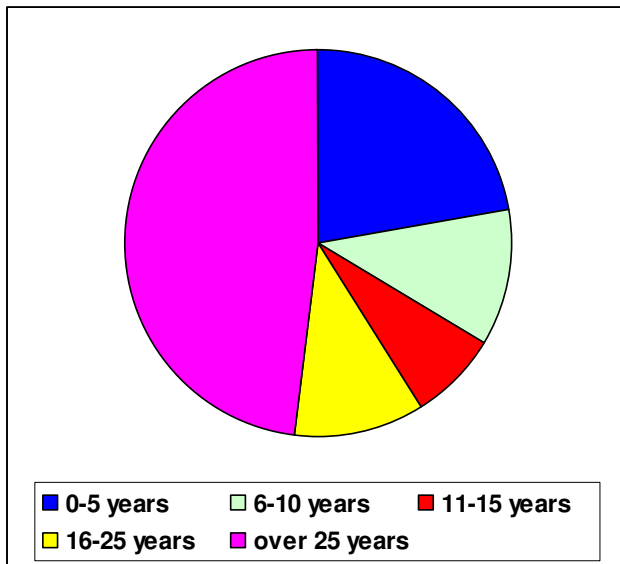
- 11 full TTF meetings thus far ... and more in coming weeks
- Numerous sub-group meetings for specific tasks
 - Diocese, other parishes, survey analysis, tuition benchmarking, follow-up calls
- Monthly reports to the Steering Committee (Fr. Donton, Dr. Weiss, and Parish Council)

Survey Results

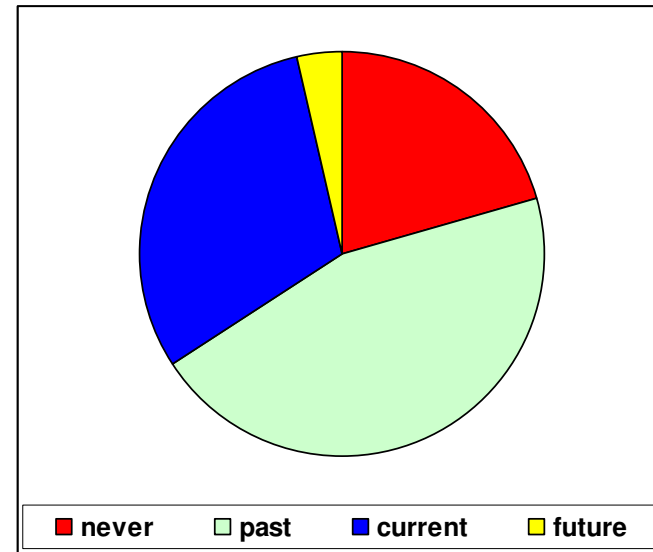
Response Summary

1125 Surveys sent to all parishioners (active + inactive)
209 Total Responses

Years at St. Pat's



Children at St. Pat's School



Bottom Line

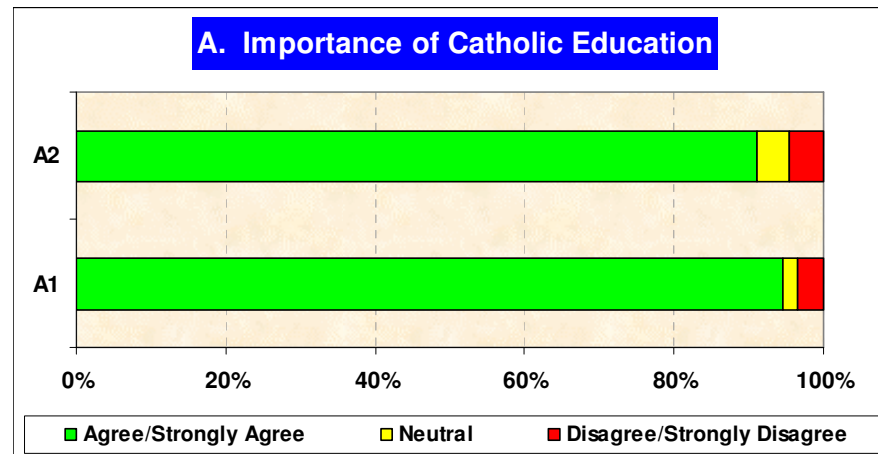
Input received from a wide cross-section of the parish

Survey Results

Data Analysis

A2. St. Patrick's School is an important part of St. Patrick's parish.

A1. Catholic education overall is an important part of our parish mission.



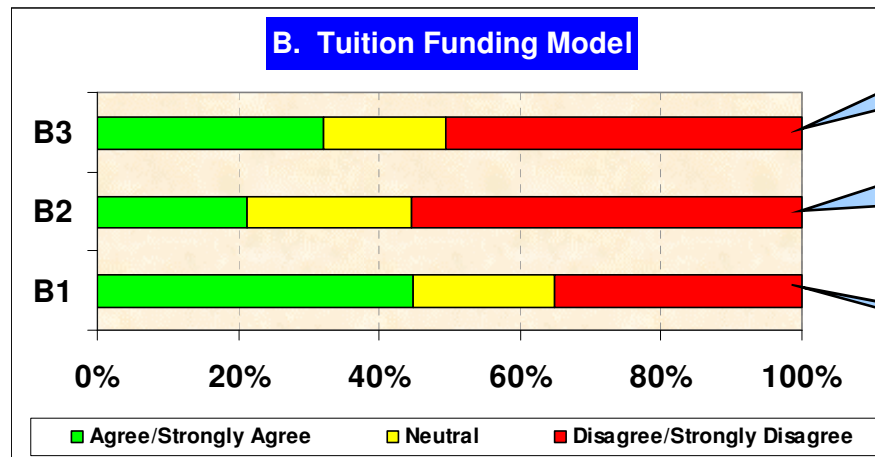
Conclusion

- **Overwhelming agreement with the importance of Catholic Education and of the importance of St. Patrick School to our parish**

Survey Results

Data Analysis

- B3.** The current funding model should be gradually modified to increase tuition/fees to where tuition/fees and parish support each pays 50% of the school cost.
- B2.** The parish should move more towards a stewardship model whereby parish support is increased to cover more than 70% of the school cost, and tuition/fees covers the balance.
- B1.** The current funding model (30% tuition/fees and 70% parish support) is about right and should be maintained.



Higher Tuition

More parish support
(lower tuition)

Current model
"about right"

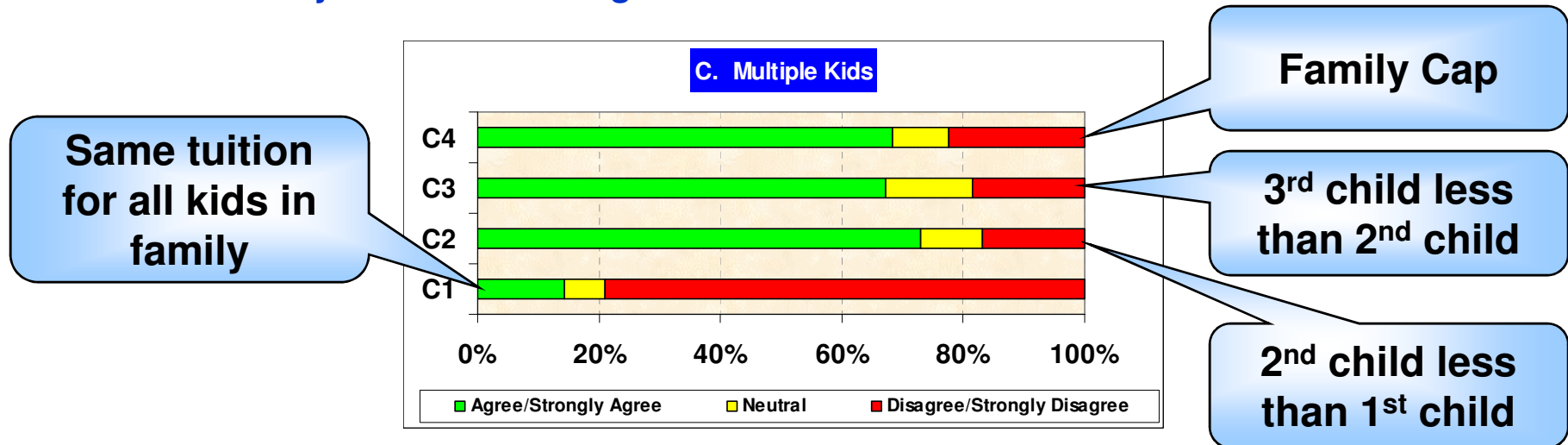
Conclusions

1. General indicator that the current funding split is "about right" ... but no strong trend.
2. Even school families had a significant majority (64%) that the funding split is "about right".
3. Most people disagreed with having more parish support for the school.
4. Those families with "never had kids at St. Pat's school" were most reluctant for increased parish support and were most in favor of higher tuition.

Survey Results

Data Analysis

- C4. Tuition for a family should be “capped” after some number of children.
- C3. The tuition for a third child should be less than that of the first and/or second child.
- C2. The tuition of a second child should be less than that of a first child.
- C1. The tuition should be the same for each child, regardless of the number of children in a family that are attending school at St. Patrick’s.



Conclusion

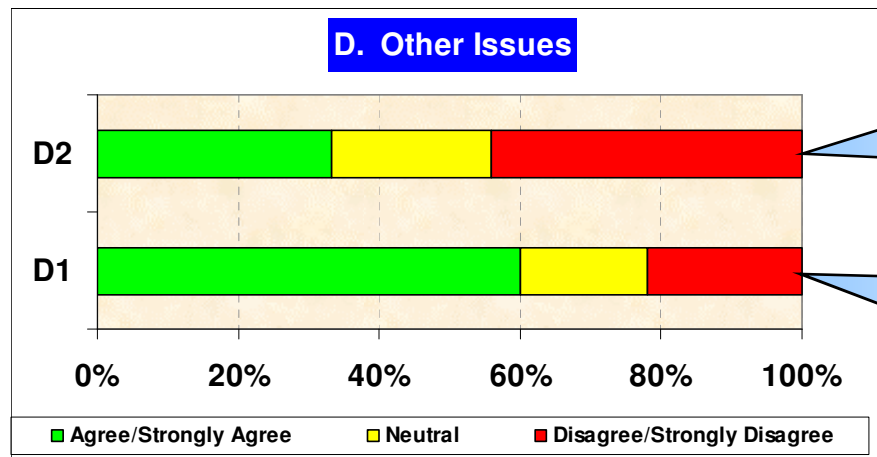
- Strong agreement with having discounts for multiple children and for having a family cap.

Survey Results

Data Analysis

D2. The current level of parish support for the school significantly limits financial support for other parish activities and/or physical improvements to St. Patrick's buildings and grounds.

D1. To be considered for tuition financial assistance (or reduced tuition), I am willing to use an outside company (with full confidentiality) to conduct an objective analysis of "ability to pay".



Parish support to school limits other funding

Use outside company for "ability to pay"

Conclusions

- Most in agreement with use of outside company to evaluate "ability to pay"
- No strong trend as to whether the level of church support for the school limits other church activities and/or physical improvements
 - The subgroup that "never had kids at St. Pat's" did, however, think that the church support limited funding elsewhere

Survey Results

Comments Analysis

150 (out of 209) surveys had comments
Many surveys had multiple comments
The comments covered a total of 83 different topics
All comments were read & evaluated

Conclusions

1. **Affordability was the absolutely dominant topic in the comments**
 - Nearly half of all the topics in the comments were on this single topic
 - Keep it highly affordable ... not for wealthy only
 - Catholic education should be available to all, and not become an elitist group
2. **Four additional topics were widely shared in various surveys**
 - The survey comments were consistent with the survey data that the parish should provide substantial support for the school
 - Catholic education is a most important goal of the parish
 - Many comments recognized that Washington public schools are a strong alternative to St. Pat's
 - We need to better highlight and communicate what makes St. Patrick school distinctive
3. **Many more topics were noted**
 - Numerous comments spread among many topics
 - Not all comments were related to tuition

Key Issues

- **Two key requirements from the diocese**
 - Sustainability
 - Ability To Pay
- **Additional elements that TTF needs to address**
 - Overall funding split between Parish Support and Tuition/Fees
 - Multiple Kids
 - Timing/Duration

Bottom Line

- Lots of considerations
- TTF will be wrestling with these issues over the next 6-8 weeks
- It's not just about the school ... it's about the entire parish
- We are prayerfully and diligently working to do what is "right" for St. Patrick's

- **Overall objective**
 - **By mid-May, have in place a policy and plan for St. Pat's tuition that can be applied consistently in future years**



Tuition Task Force

**Chris Armstrong
Dr. Matt Gorman
Eric Mickels**

**Dawn Crawford
John Grillot
Dr. Shawn Piers**

**Morrie Franz
Dustin McDougall
Christine Serangeli**